



France (Channel
Manche) England

CobBAUGE

European Regional Development Fund



Introduction to the Workshops

We're now beginning the design process for two new houses built from CobBauge.



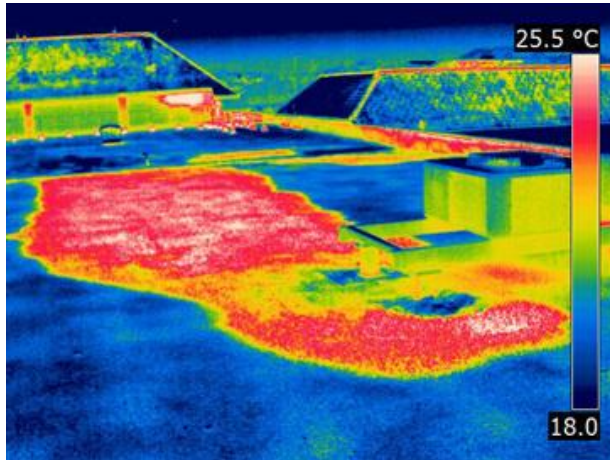
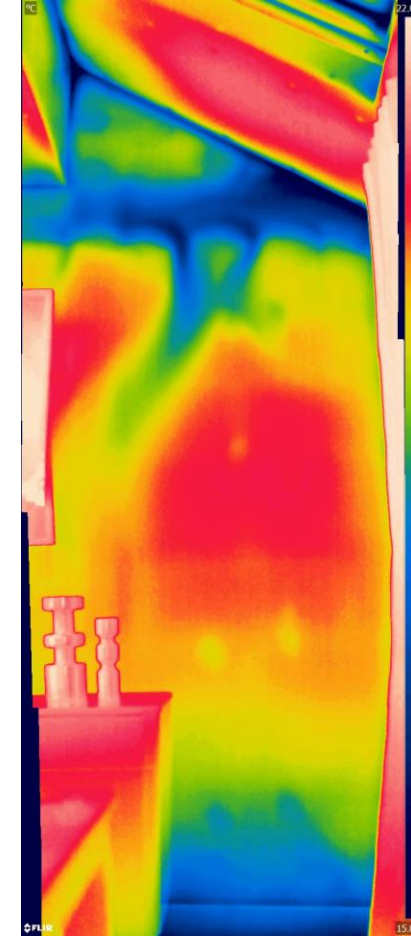
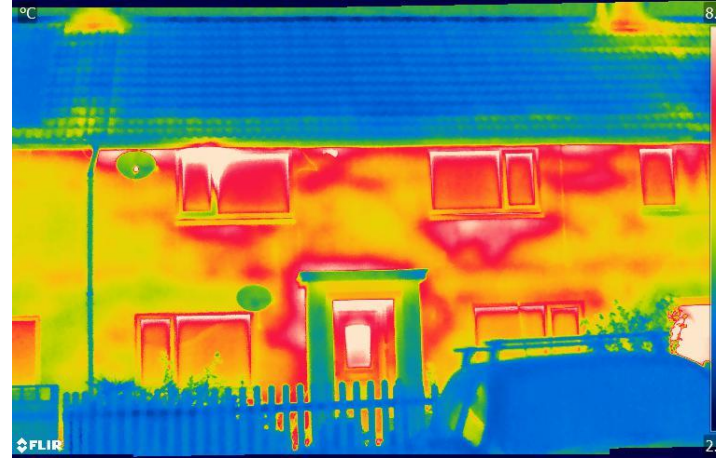
In order to deliver these CobBauge houses, we need to pay particular attention to the detailing.

The success (or failure) of our buildings is largely dependant on the **details** we use to build them.



Just ask the architects of the Tower of Pisa...

As modern buildings and the materials used to build them become more complex, so do the problems associated with poor detailing.



Natural constructions such as Cob and CobBauge are probably **more dependent** on good detailing than more modern building techniques.

Poor detailing can lead to catastrophic failure...

The key concern - moisture

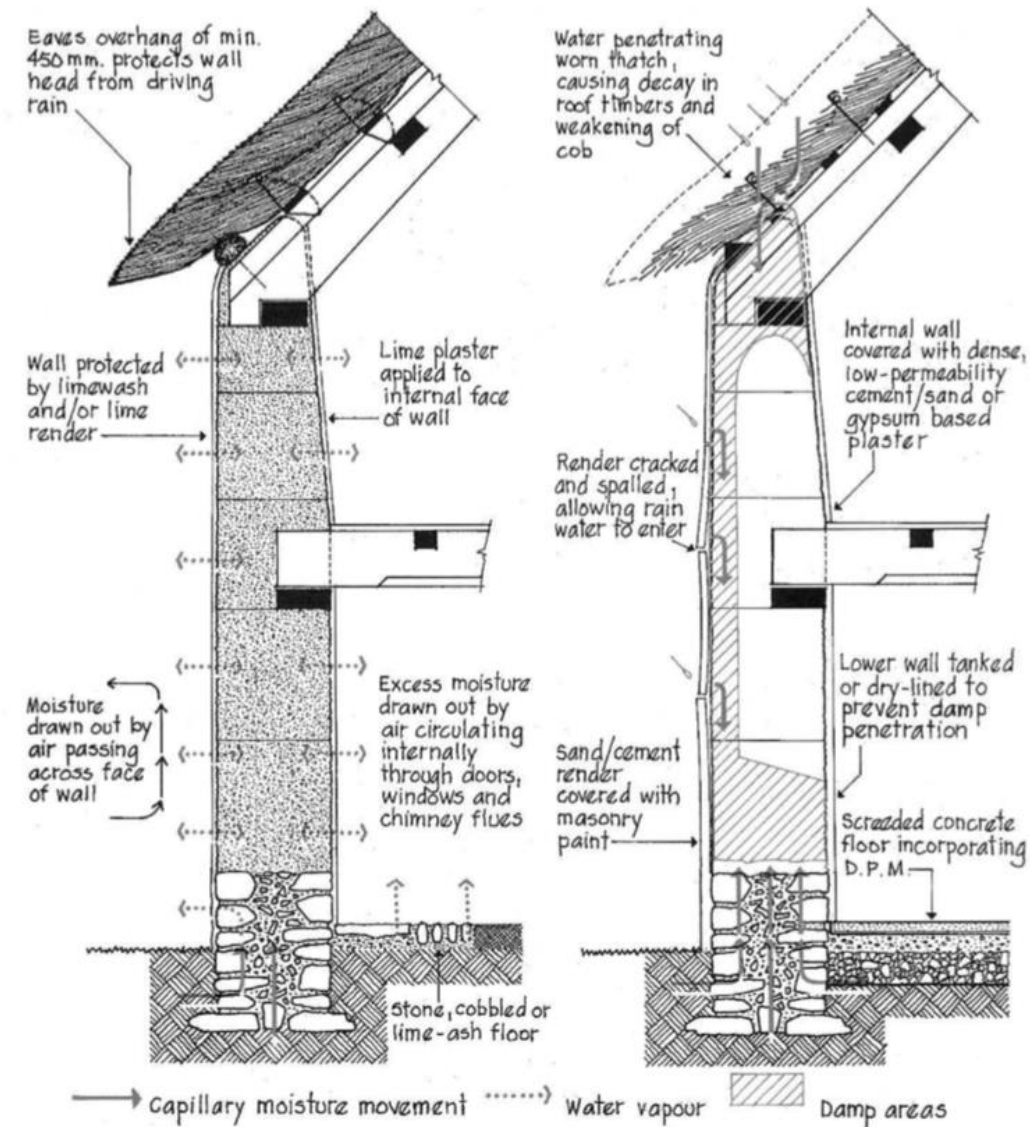


Source: East Dorset District Council (2008)

The general principle is therefore to design cob buildings with a

“Gud ‘at and bouts”

Source: DEBA (2002)



Whilst historic cob construction was constrained by the materials available, in the 21st century, we now have access to many new materials and understanding on thermal performance.

For example. The plinth ('Bouts') doesn't need to be solid stone anymore. What about other more insulative materials to minimise cold bridging.

We don't yet have all the answers for how a CobBauge building might be detailed...

This is where you come in!



Co-creation Workshop

We would like you to work together to develop 'ideas' for series of 'typical' details for a CobBauge building.

There will be 4 tables. Each with a different theme:

1. Foundation to wall. Footing detail.
2. Roof to wall eaves detail.
3. Window / door opening detail.
4. Ideas for layout / passive design of a CobBauge House.

Things to consider are:

- Moisture protection
- Minimising cold bridging
- Utilising thermal mass
- Location of the structural / thermal layers within a detail

Co-creation Workshop

30 minutes for workshop

You can choose where you would like to contribute to, though feel free to circulate between tables.

Post workshop there will be 30 minutes for discussion.

Followed by wine and canapés.

